

**Address**

390 West Bay Road, KY1-1203 George Town,  
Grand Cayman, Cayman Islands,

**Contact**

+1 345 949 3521  
info@bhhs Cayman Islands.com

---

**AIRPORT INDUSTRIAL PARK CANAL**

George Town, Cayman Islands

**PROPERTY DETAILS**

---

Price: CI\$1,795,000	MLS#: 412864	Type: Land
Listing Type: Commercial	Status: Current	Width: 135
Depth: 150	Built: 0	Acres: 0.4596

**PROPERTY DESCRIPTION**

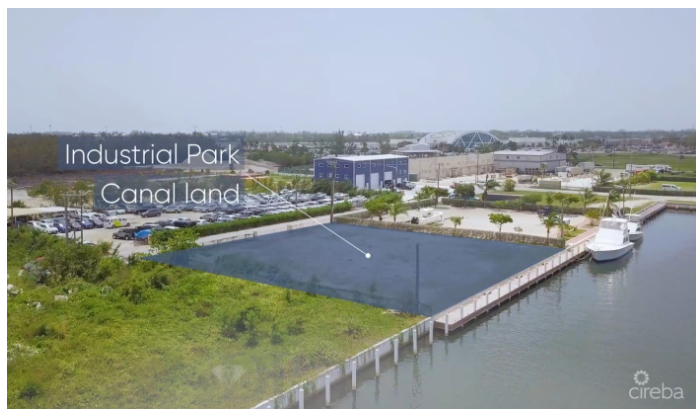
---

This RARE canal front, commercial property enjoys a 160' dock and is located on Cayman's only canal front commercial subdivision. Having already gone through the Planning process, this property is filled and ready for "GO!". Approved planning permission is for a mixed-use development with a center tower and two side buildings. There are 8 garages in each side building (total 16 garages) with the 4 end garages having private bathrooms. Breathtaking views and ease of access to the North Sound make the 8 studio apartments an incredibly unique offering. Think boat captains, pilots, etc. fly in, drive 2 minutes to your boat dock and arrive at your Estate Home by sea. Your captains return to their private studios to await your next adventure. The Center tower houses convenient and modern office space with roof access, but the design focus was for very convertible usage. This is an incredibly unique and one of a kind offering - call us to discuss the possibilities!

**PROPERTY FEATURES**

---

Views	Canal Front
Block	20C
Parcel	126
Zoning	Commercial
Sea Frontage	135
Road Frontage	135
Soil	Marl



CIREBA MLS LDX feed courtesy of BERKSHIRE HATHAWAY HOMESERVICES CAYMAN ISLANDS

**\*Disclaimer:** The information contained herein has been furnished by the owner(s) and or their nominee and represented by them to be accurate. The listing company, agent and CIREBA MLS disclaims any liability or responsibility for any inaccuracies, errors or omissions in the represented information. The listing details herein are also courtesy of CIREBA (Cayman Islands Real Estate Brokers Association) MLS and/or via LDX (Listing Data Exchange) feed. All the information contained herein is subject to errors, omissions, price changes, prior sale or withdrawal, without notice and is at all times subject to verification by the purchaser(s).