

Address

390 West Bay Road, KY1-1203 George Town,
Grand Cayman, Cayman Islands,

Contact

+1 345 949 3521
info@bhhs caymanislands.com

CANAL CORNER LOT - FILLED WITH SEAWALL

Savannah, Cayman Islands

PROPERTY DETAILS

| | | |
|---------------------------------------|-----------------|--------------|
| Price: CI\$350,000 | MLS#: 415795 | Type: Land |
| Listing Type: Low Density Residential | Status: Current | Width: 110 |
| Depth: 105 | Built: 0 | Acres: 0.265 |

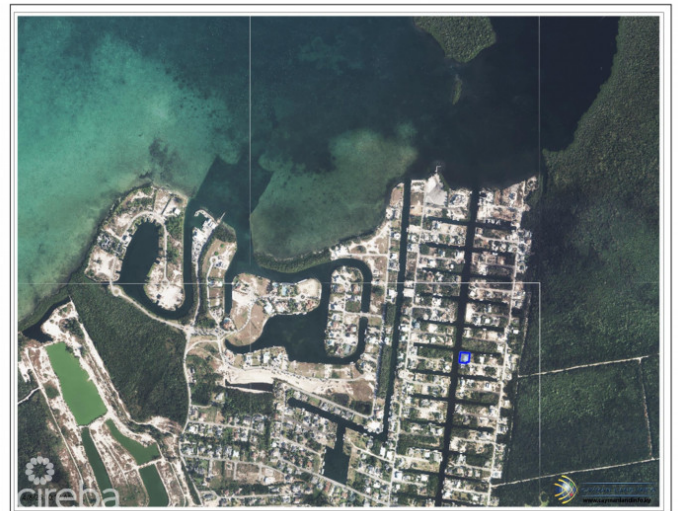
PROPERTY DESCRIPTION

Build your dream waterfront development with this oversized, canal-front lot nestled in the highly sought after North Sound Estates. Boasting an impressive 210 feet of concrete sea wall, this filled, ready to build, highly elevated expansive property offers direct access to the North Sound and beyond, ideal for boating enthusiasts or those seeking tranquil luxury living. Set within a peaceful, well established residential neighborhood, this prime parcel combines serenity with convenience. Enjoy close proximity to the Countryside Shopping Village, schools, and a host of essential amenities, all just minutes away.

PROPERTY FEATURES

| | |
|---------------|-------------------------|
| Views | Canal Front |
| Block | 27C |
| Parcel | 117 |
| Zoning | Low Density residential |
| Sea Frontage | 210 |
| Road Frontage | 30 |

IMAGES



CIREBA MLS LDX feed courtesy of RAINBOW REALTY LTD.

***Disclaimer:** The information contained herein has been furnished by the owner(s) and or their nominee and represented by them to be accurate. The listing company, agent and CIREBA MLS disclaims any liability or responsibility for any inaccuracies, errors or omissions in the represented information. The listing details herein are also courtesy of CIREBA (Cayman Islands Real Estate Brokers Association) MLS and/or via LDX (Listing Data Exchange) feed. All the information contained herein is subject to errors, omissions, price changes, prior sale or withdrawal, without notice and is at all times subject to verification by the purchaser(s).